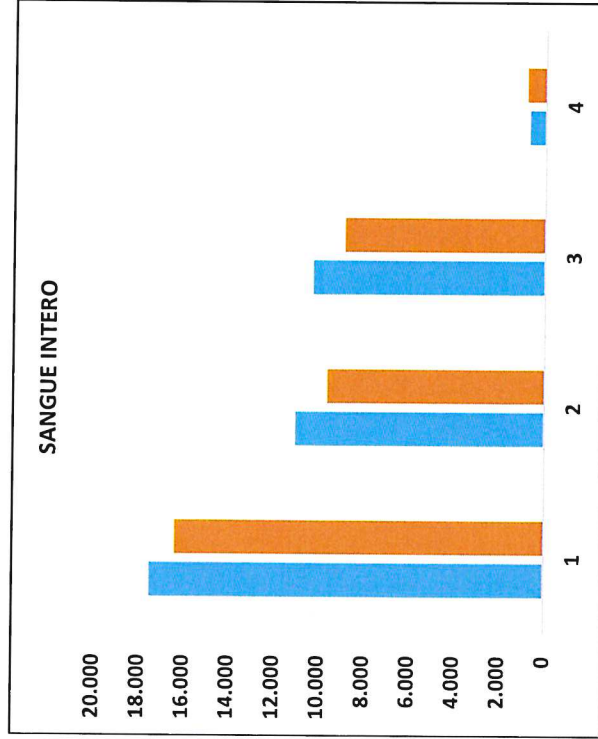
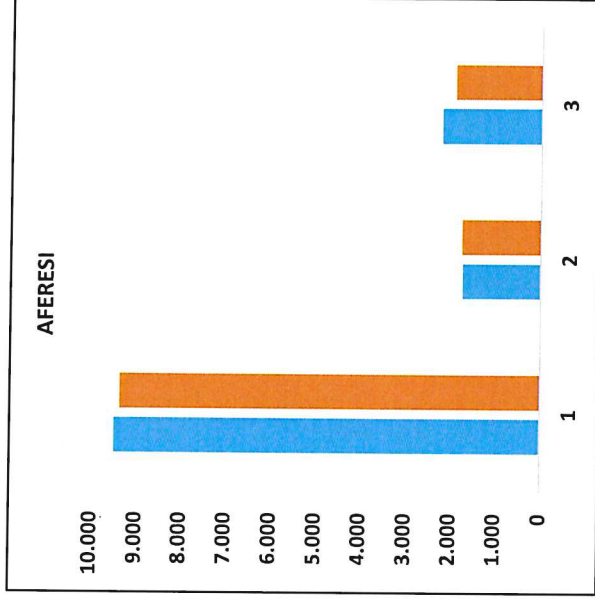


DAL 01 GENNAIO AL 31 OTTOBRE



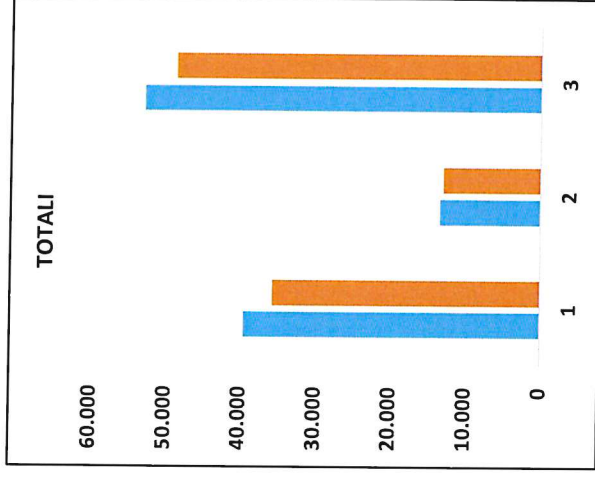
2019	17.511	11.051	10.285	703	39.550
2020	16.375	9.627	8.904	844	35.750
diff.	-1.136	-1.424	-1.381	141	-3.800

- 1 - U.D.R. MONTEROSSO
- 2 - A.O.P. PERIFERICHE
- 3 - STRUTTURE OSPEDALIERE
- 4 - AUTONOME
- 5 - TOTALI



2019	9.486	1.735	2.212	13.433
2020	9.363	1.757	1.926	13.046
diff.	-123	22	-286	-387

- 1 - U.D.R. MONTEROSSO
- 2 - A.O.P. PERIFERICHE
- 3 - STRUTTURE OSPEDALIERE
- 4 - TOTALI



2019	39.550	13.433	52.983
2020	35.750	13.046	48.796
diff.	-3.800	-387	-4.187

- 1 - TOTALE SANGUE INTERO
- 2 - TOTALE AFERESI