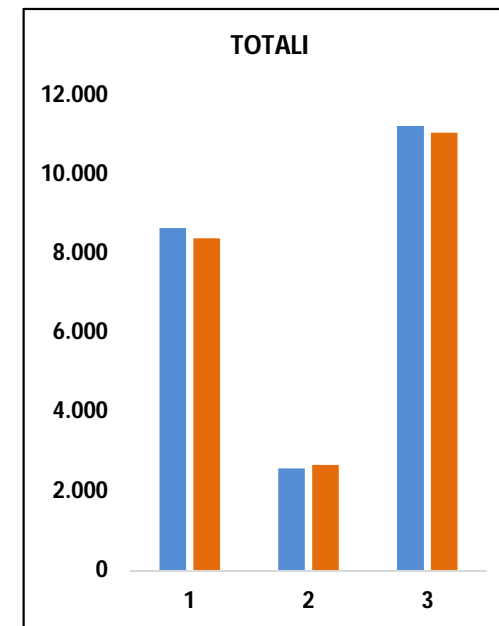
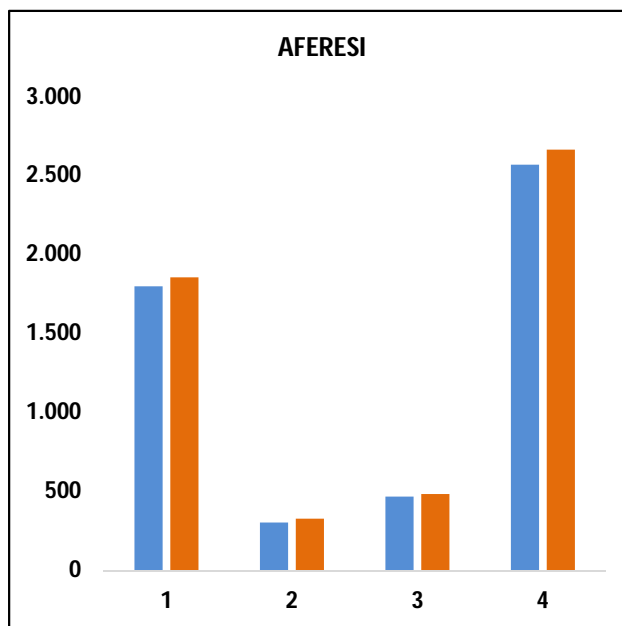
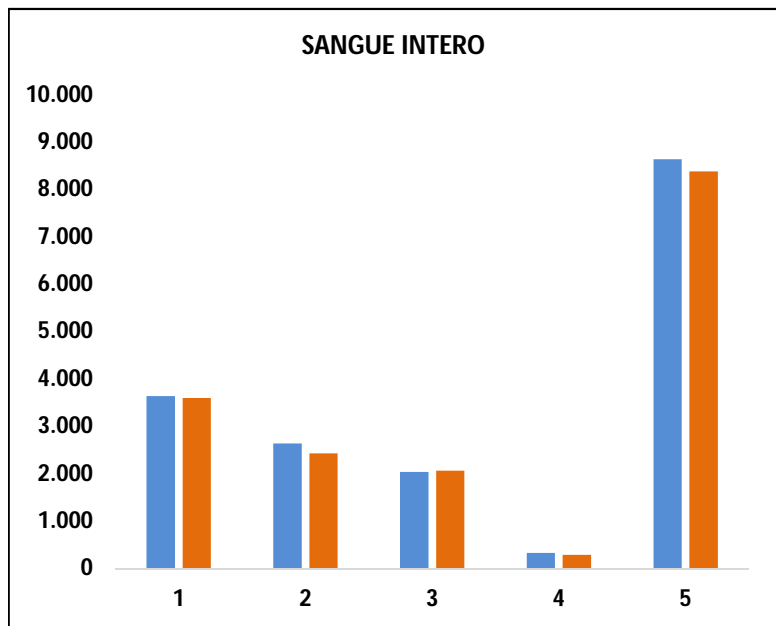


DAL 01 GENNAIO AL 28 FEBBRAIO



2017	3.638	2.636	2.036	329	8.639
2018	3.598	2.428	2.063	290	8.379
diff.	-40	-208	27	-39	-260

2017	1.799	304	467	2.570
2018	1.855	327	483	2.665
diff.	56	23	16	95

2017	8.639	2.570	11.209
2018	8.379	2.665	11.044
diff.	-260	95	-165

1 - U.D.R. MONTEROSSO
2 - A.O.P. PERIFERICHE
3 - STRUTTURE OSPEDALIERE
4 - AUTONOME
5 - TOTALI

1 - U.D.R. MONTEROSSO
2 - A.O.P. PERIFERICHE
3 - STRUTTURE OSPEDALIERE
4 - TOTALI

1 - TOTALE SANGUE INTERO
2 - TOTALE AFERESI