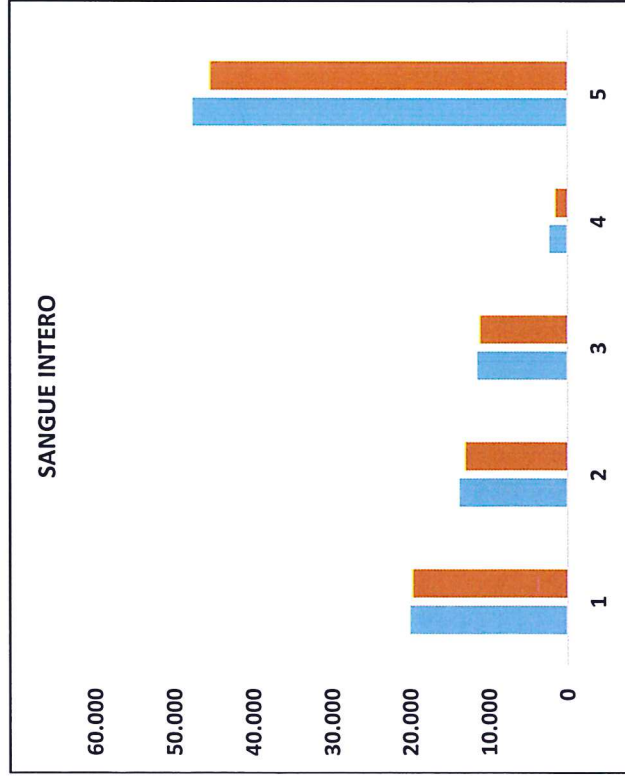
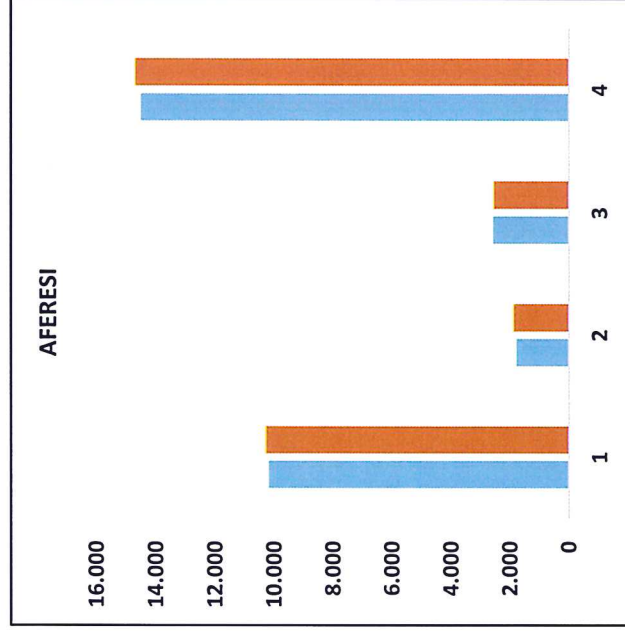


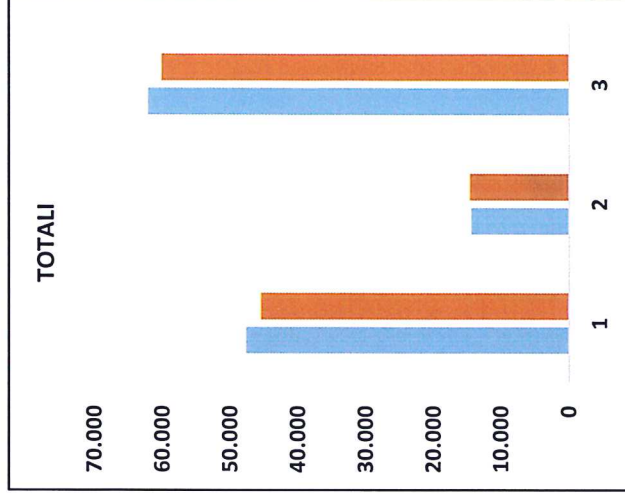
DAL 01 GENNAIO AL 30 NOVEMBRE



1 - U.D.R. MONTEROSSO
2 - A.O.P. PERIFERICHE
3 - STRUTTURE OSPEDALIERE
4 - AUTONOME
5 - TOTALI



1 - U.D.R. MONTEROSSO
2 - A.O.P. PERIFERICHE
3 - STRUTTURE OSPEDALIERE
4 - TOTALI



1 - TOTALE SANGUE INTERO
2 - TOTALE AFERESI

2017	20.041	13.765	11.509	2.312	47.627
2018	19.727	13.019	11.140	1.541	45.427
diff.	-314	-746	-369	-771	-2200

2017	10.163	1.779	2.565	14.507
2018	10.260	1.878	2.547	14.685
diff.	97	99	-18	178

2017	47.627	14.507	62.134
2018	45.427	14.685	60.112
diff.	-2.200	178	-2.022