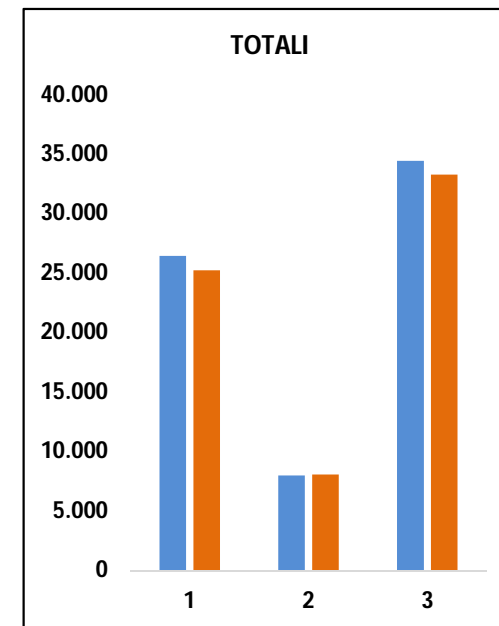
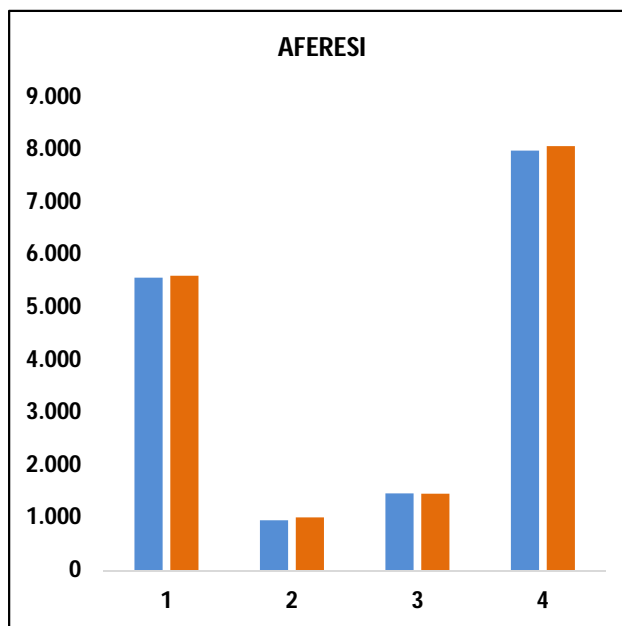
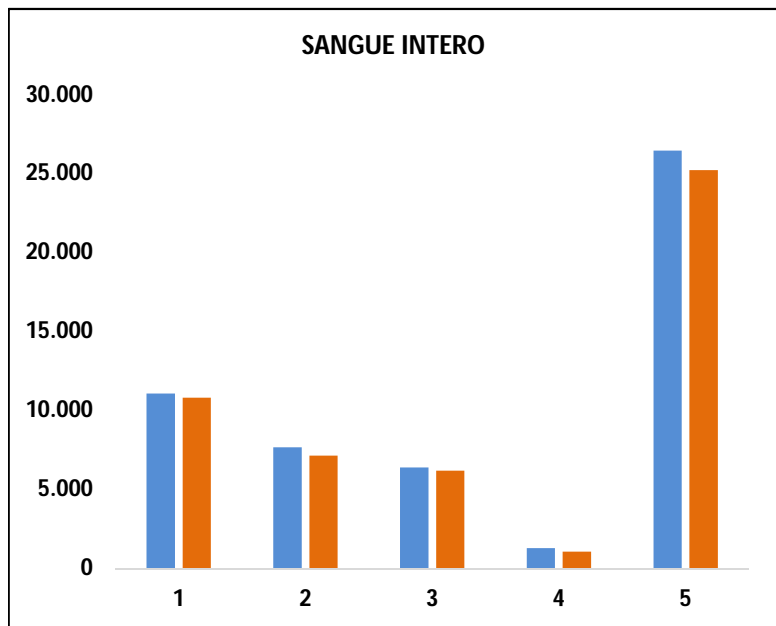


DAL 01 GENNAIO AL 30 GIUGNO



2017	11.085	7.684	6.392	1.292	26.453
2018	10.812	7.142	6.202	1.071	25.227
diff.	-273	-542	-190	-221	-1226

2017	5.559	952	1.466	7.977
2018	5.598	1.007	1.457	8.062
diff.	39	55	-9	85

2017	26.453	7.977	34.430
2018	25.227	8.062	33.289
diff.	-1.226	85	-1.141

1 - U.D.R. MONTEROSSO
2 - A.O.P. PERIFERICHE
3 - STRUTTURE OSPEDALIERE
4 - AUTONOME
5 - TOTALI

1 - U.D.R. MONTEROSSO
2 - A.O.P. PERIFERICHE
3 - STRUTTURE OSPEDALIERE
4 - TOTALI

1 - TOTALE SANGUE INTERO
2 - TOTALE AFERESI